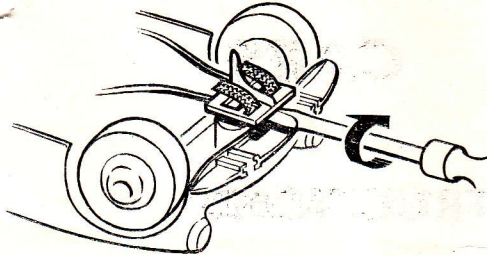


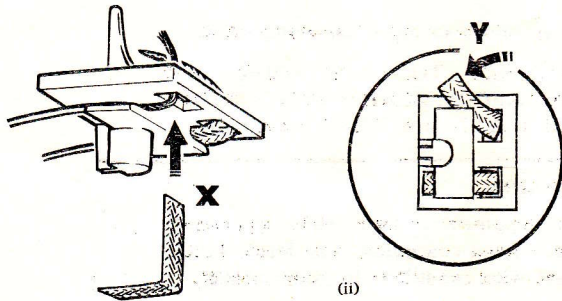
GUIDE PIN & PICK-UP MAINTENANCE

move front Bumper by very carefully pulling forward and out (diagram v. A, on page 3).



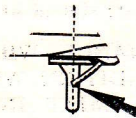
(i)

- Ease out Guide Pin/Pick-Up Assembly with the aid of a small screwdriver, insert blade of screwdriver under the front of the Guide Pin and gently turn (diagram i).

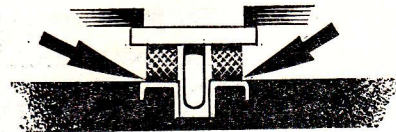


(ii)

- Referring to Diagram ii, remove old Pick-Ups by withdrawing sideways from under the claw on top of Guide Pin.
- Withdraw Harness Wires from Guide Pin.
- When re-assembling use new Guide Pin and Pick-Ups as necessary.
- To re-assemble, feed Harness Wire under claws and down through Pick-Up Slots in Guide Pin (diagram ii, X), ENSURING THAT THE RIGHT HAND HARNESS WIRE GOES INTO THE RIGHT HAND SLOT AND THE LEFT HAND HARNESS WIRE INTO THE LEFT HAND SLOT.
- Bend Pick-Ups Braid to an "L" shape and feed through Slots in Guide Pin (diagram ii, X) ensure that good contact is made with the bare ends of Harness Wires.
- Insert top ends of Pick-Up Braids under claws on top of Guide Pin (diagram ii, Y).

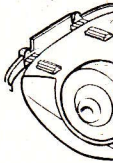


(iii)



(iv)

- Trailing ends of the Pick-Up Braids should be swept back as shown in diagram iii.
- Both Braids must make even contact with the rails (diagram iv).



- To re-attach Unit (S)
- Referring to diagram v, screwdriver should be used to gently pry the body (S) from the bumper.
- Pull M (S) bracket from bumper.